



# 25<sup>th</sup> wfhss CONGRESS



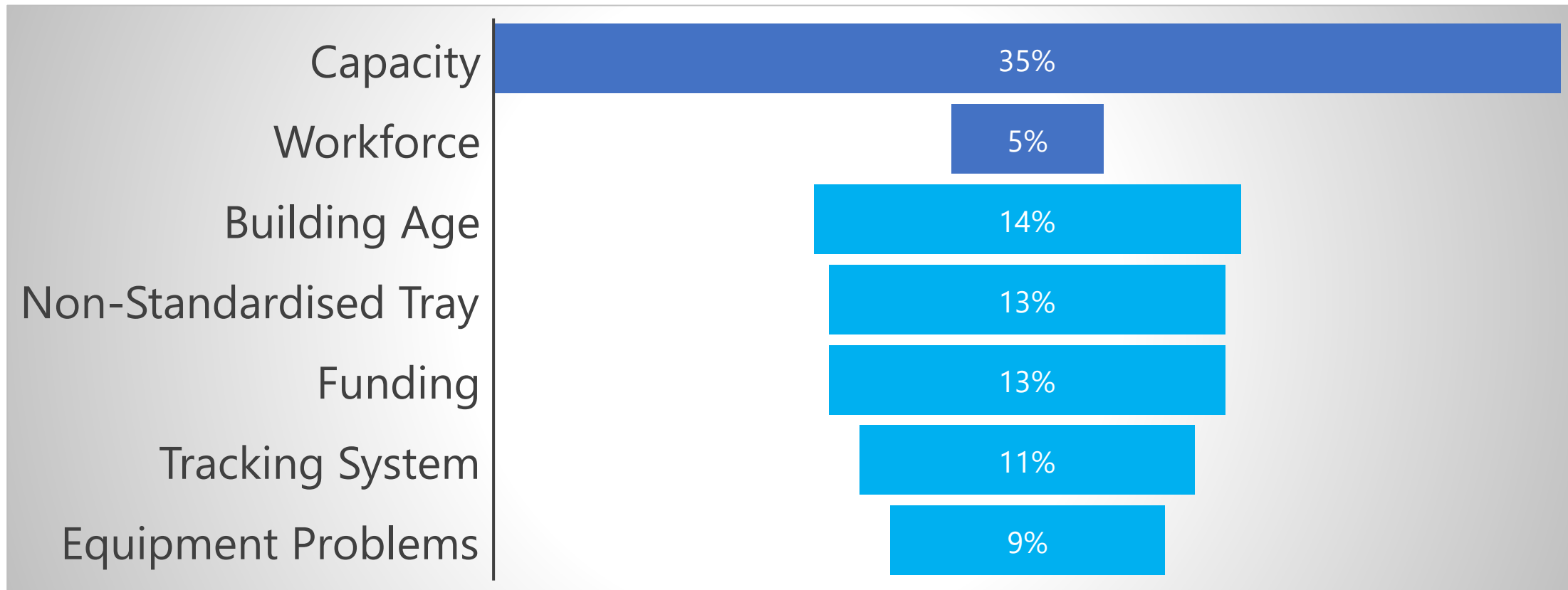
20-23  
**NOV** 2024  
SANTIAGO-CHILE

# INCREASING STERILE SERVICE DEPARTMENT REPROCESSING CAPACITY TO SUPPORT SUSTAINABILITY OUTCOMES

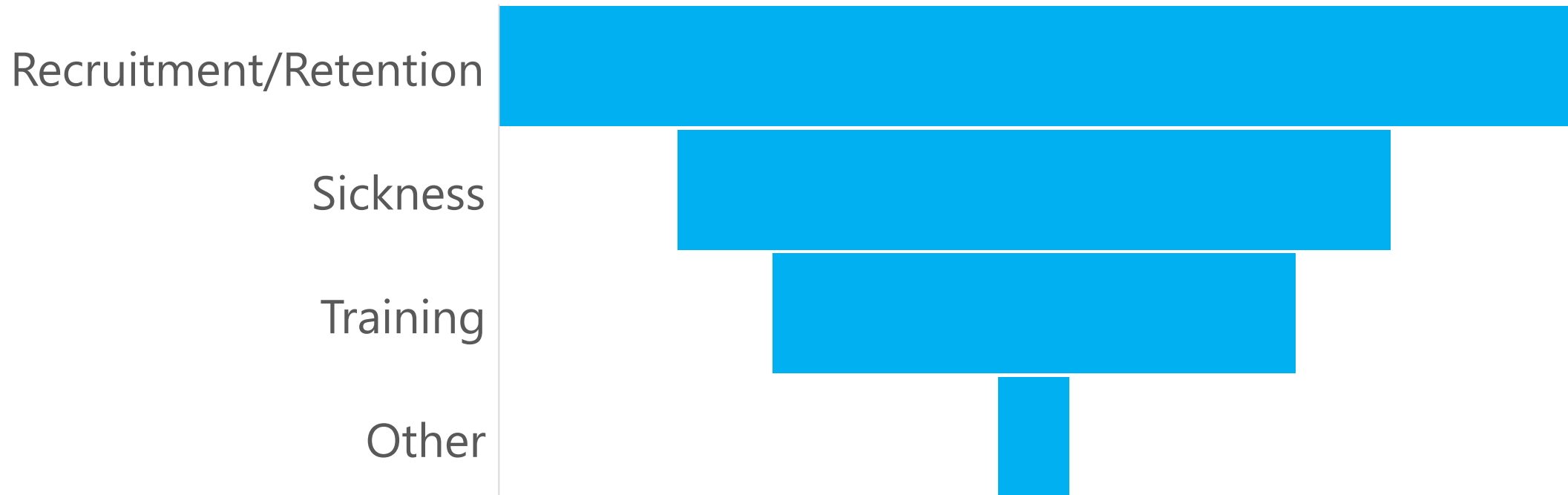
**Name: DR. SULISTI HOLMES**

**Affiliation: Head of Decontamination and Incident  
Reporting Centre, National Services Scotland**

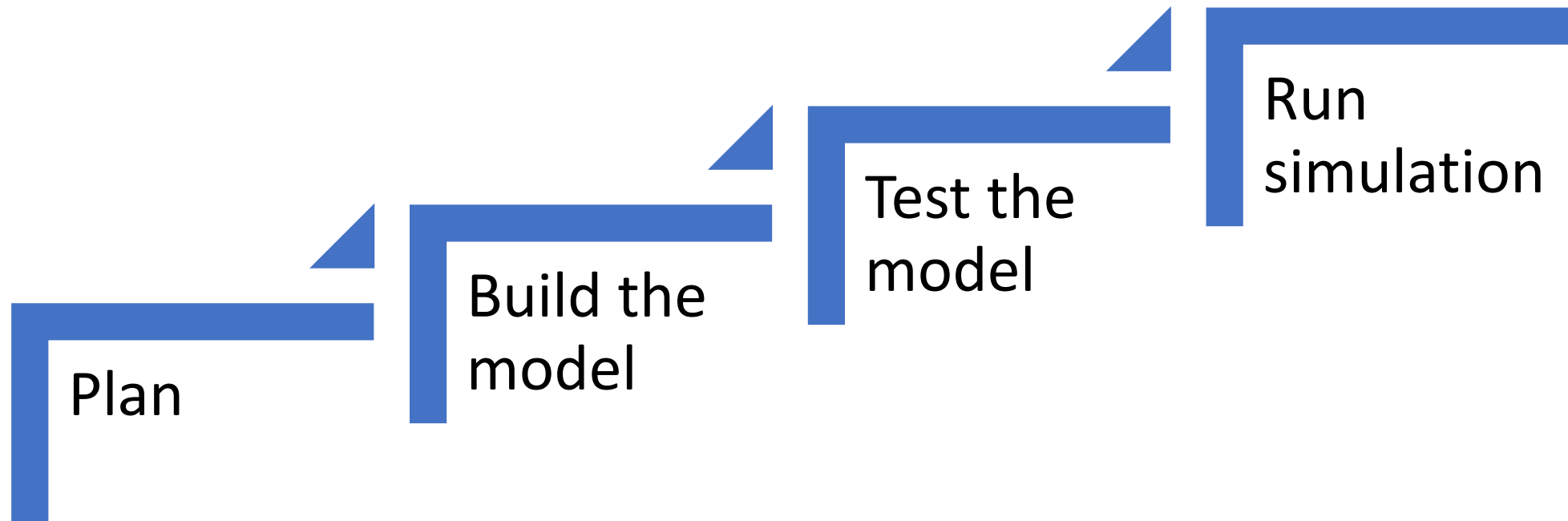
# Survey Results - Issues



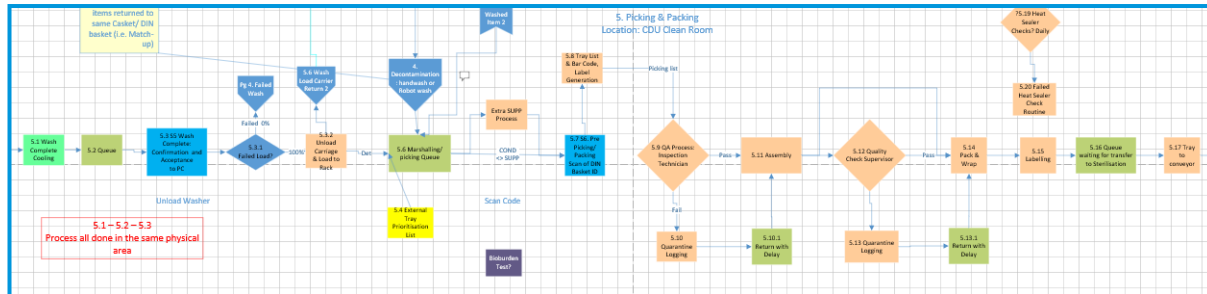
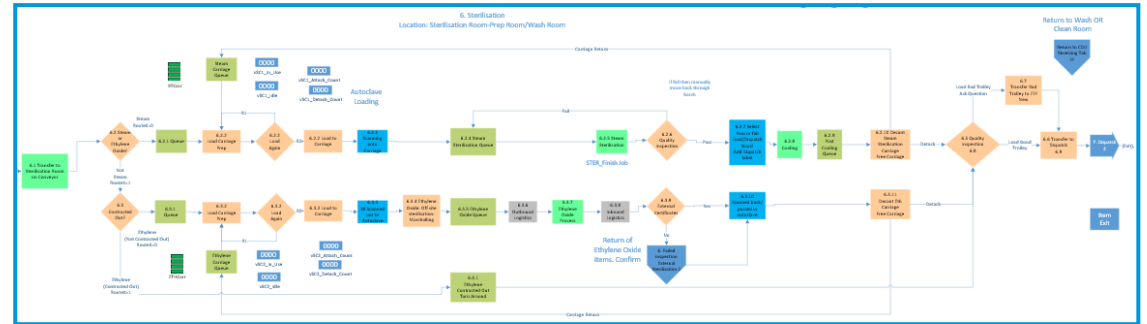
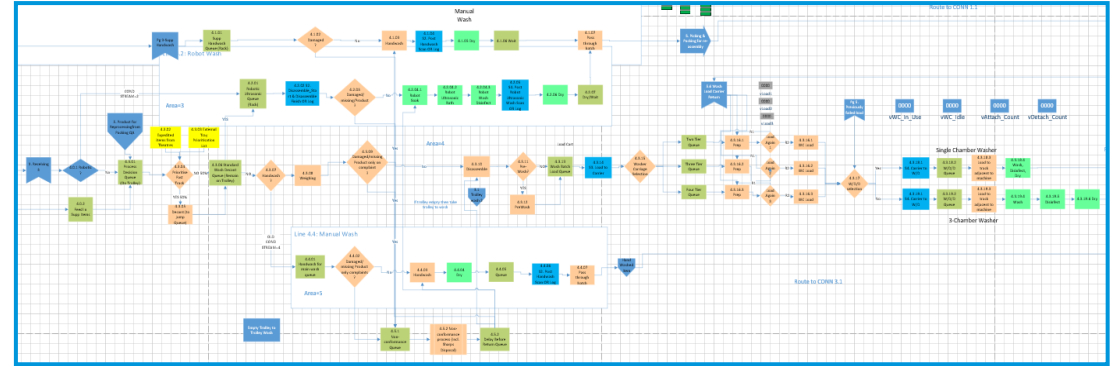
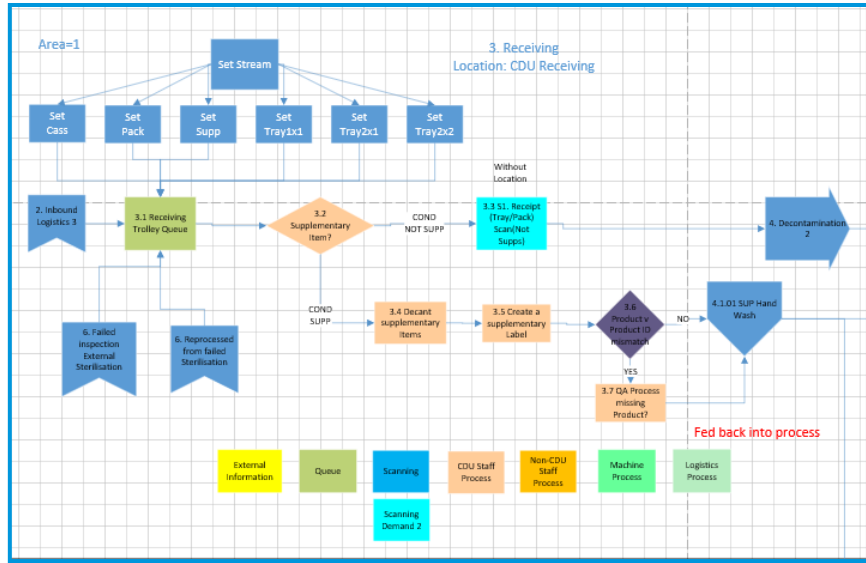
# Survey Results – Workforce Issues



# How did we do it?



# Flowcharts



## Input

- Opening hours
- Schedule of works
- Time to perform each stage
- Staff shifts & calendars
- Number of staff
- No of equipment
- Equipment cycle time /downtime



## Process Simulation (ProModel®)



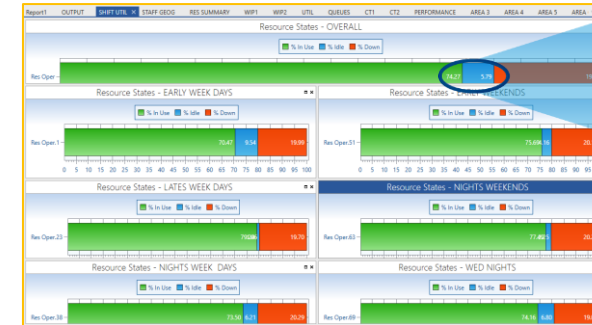
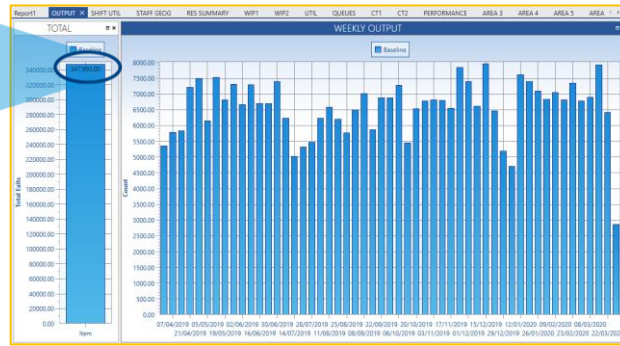
## Output

- Throughput
- Utilisation
- Turnaround time
- Productivity
- Bottleneck, delays



# As-is-Performance vs Scenario 1

347,993.00

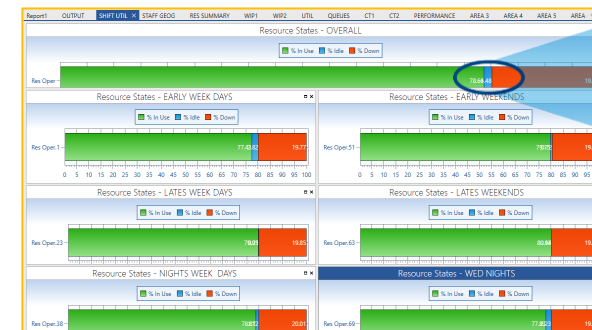


74%

As-is- Performance

369,326.00

(up 6%)



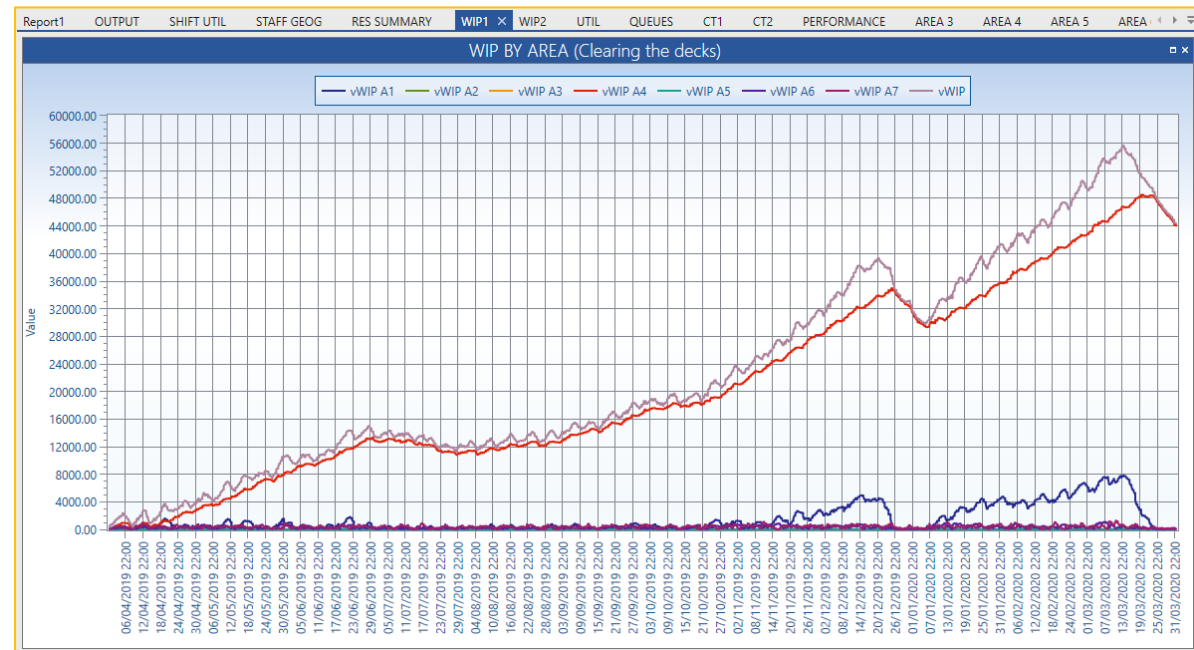
79%

Scenario 1 (As-is-Staffing)



# Scenario 1

48 hours turnaround:  
 As-is-Performance - 69%  
 Scenario 1 (As-is-Staffing) - 41%



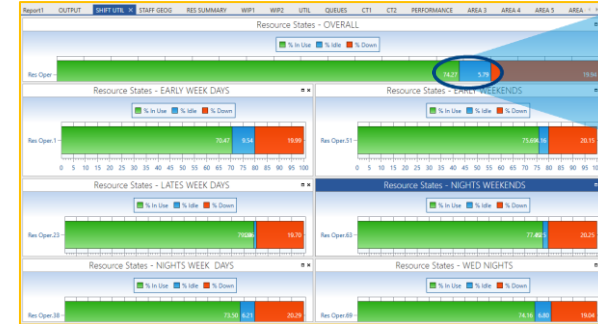
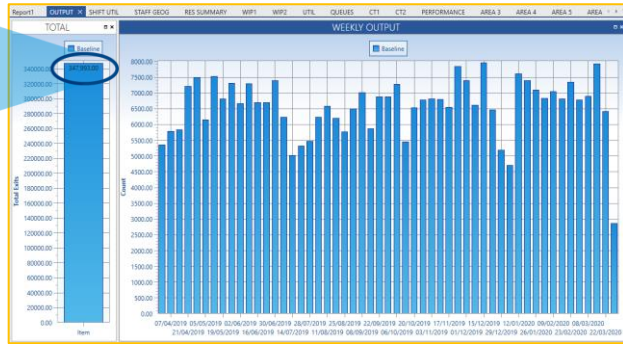
Increasing inventory





# As-is-Performance vs Scenario 2

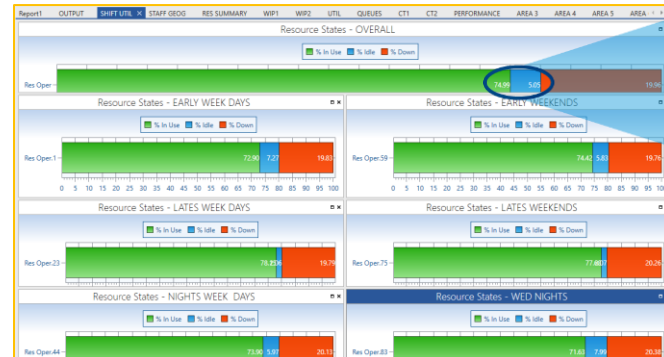
347,993.00



74%

As-is- Performance

417,136.00



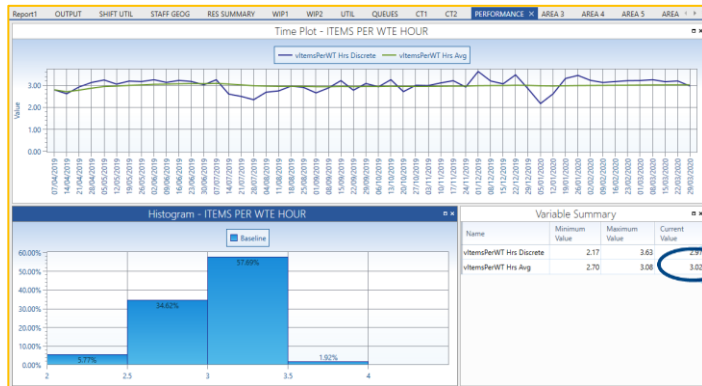
75%

(up 20%)

Scenario 2 (15% Increased Staffing)

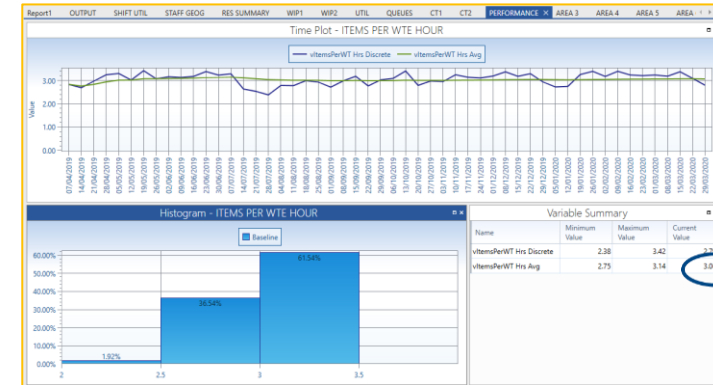


# Productivity (items/wte)



3.02

As-is-Performance

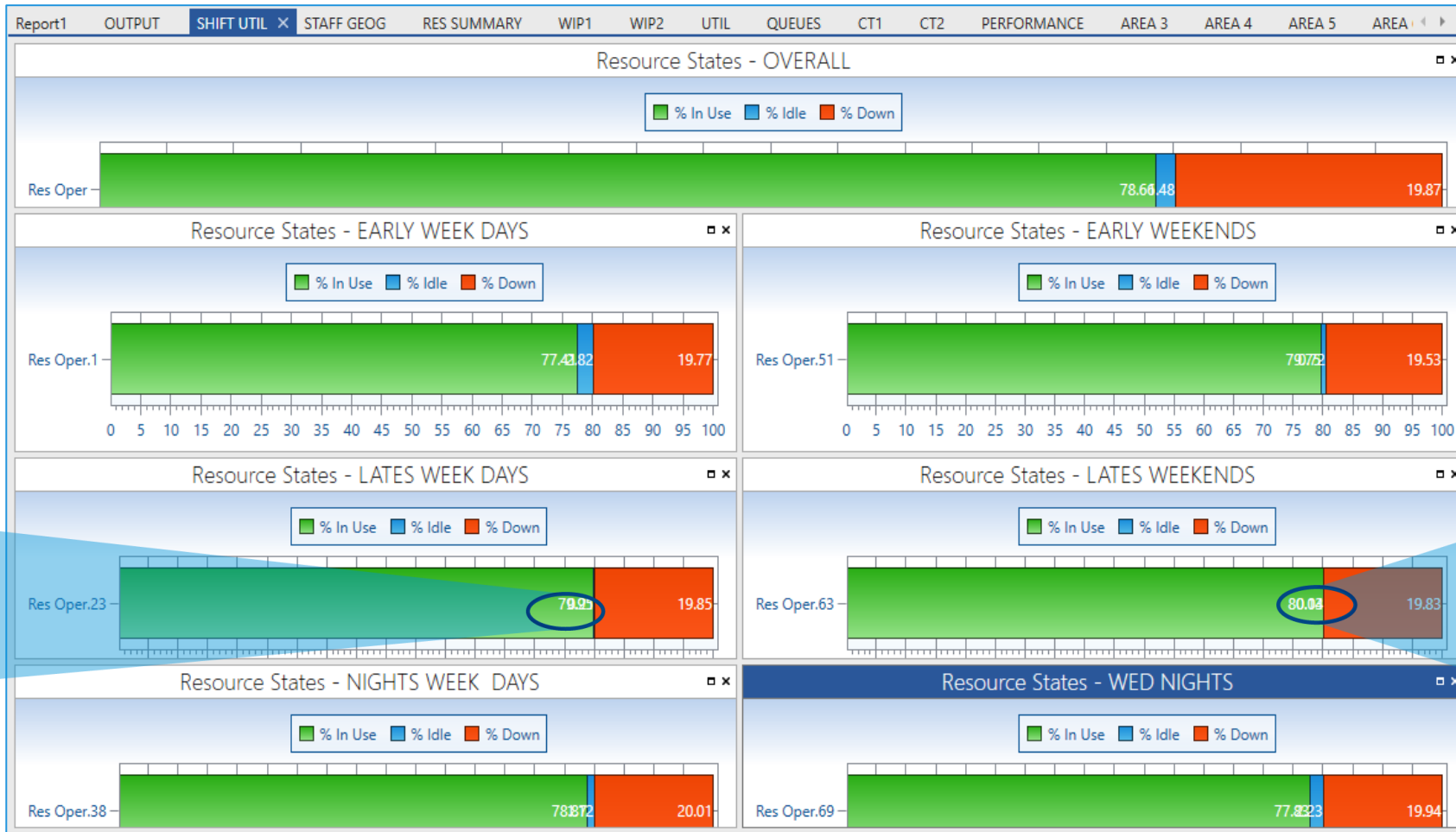


3.06

Scenario 2 (15% Increased Staffing)



# Shift additional staff?



80%

80%



# Acknowledgement

Tim Cooke, ProModel UK

Slawomir Olejnik, Gary Preston and Leigh Hunter,  
Central Decontamination Unit, NHS Tayside

Gillian McIntosh, NHS National Services Scotland



[www.linkedin.com/in/sulisti-holmes-94202676](https://www.linkedin.com/in/sulisti-holmes-94202676)

